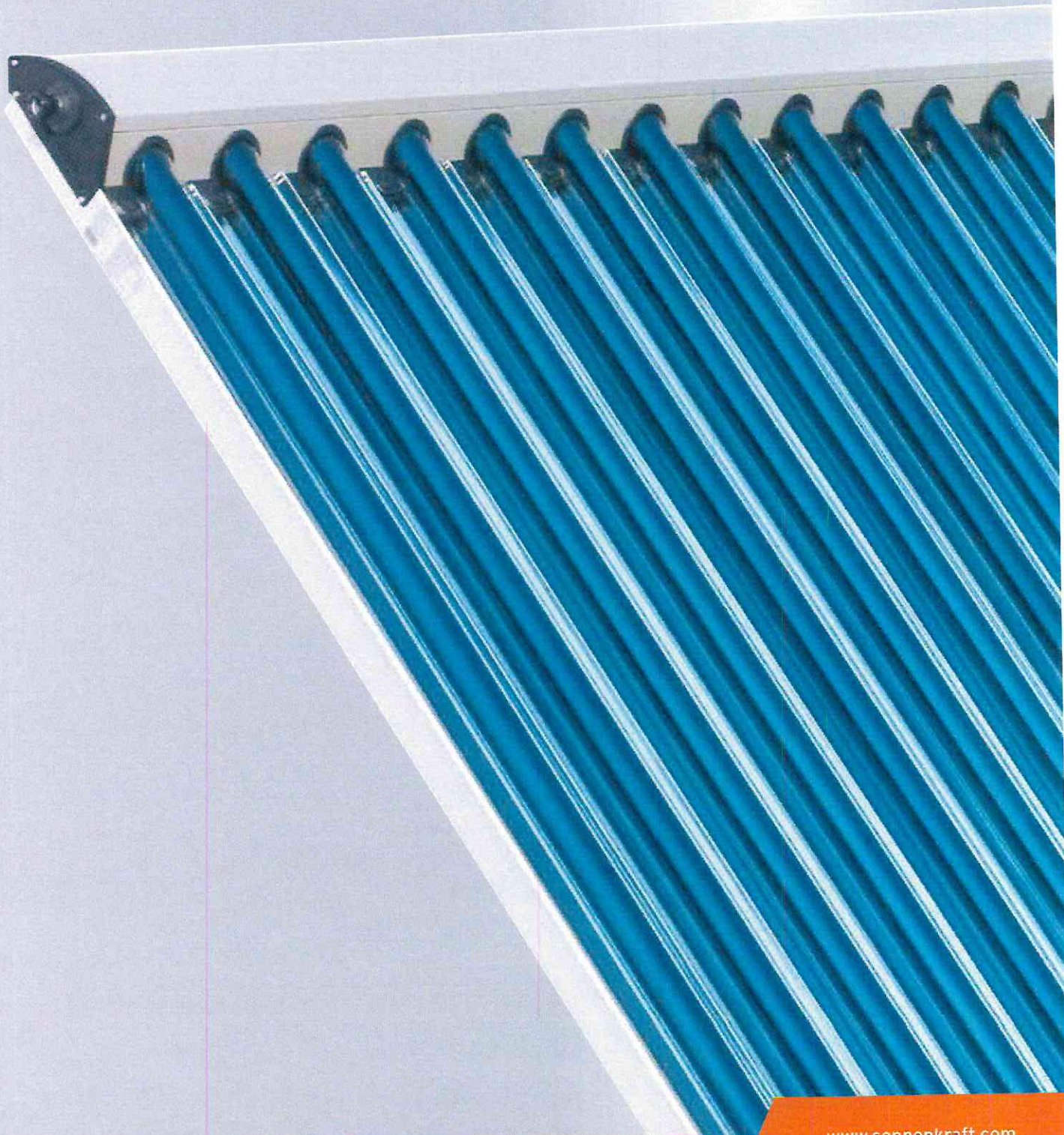


Evacuated tube collector

VK25



Evacuated tube collector VK25

The evacuated tube collector VK25 with CPC reflector technology is a high-performance product, with a proven track record. The collector's evacuated tubes provide an extremely efficient heat transfer to the solar loop.

Specifications VK25

	VK25
Name	evacuated tube collector
Collectortype	roof mounted
Gross area	2,57 m ²
Aperture area	2,22 m ²
Absorber area	2,36 / 1,18* m ²
Length	1647 mm
Width / width incl.	1560 / 1612 mm
Connection	
Height	107 mm
Weight empty	42 kg
Collector capacity	2,3 l
Max. operating pressure	10 bar
Idle temperature	286 °C
Recommended throughput	ca. 15 - 30 l/h pro m ²
Collector field piping	max. 6 pcs. in series
Min. collector incline	15 °
Max. collector incline	75 °
Connections	3/4" male/female screw connection
Absorber	Aluminium
Hydraulic design	U pipes (Cu pipes in evacuated tubes) in harp design
Absorption (α) / Emission (ε)	0,96 / 0,06
Collector housing	Aluminium
Heat insulation	tube: evacuated; collector: mineral wool
Collector glazing	evacuated tubes (borosilicate glass)
Number of tubes	14 evacuated tubes
Efficiency (Aperture) η _{0a}	0,605
Heat transfer coefficient a ₁	0,850 W/(m ² K)
Temperature depending heat transfer coefficient a ₂	0,010 W/(m ² K ²)
Angle correction factor K50°	0,947
Solar Keymark Nr.	011-7S115 R

*): jacket surface area of inner tubes

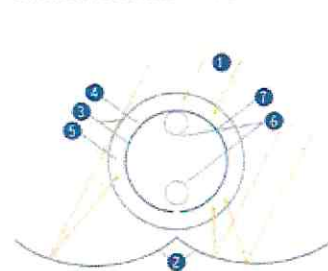
System specification VK25

Hot water:
1 - 1.5m² per person

backup heating unit:
per m² collector approx. 100l storage capacity



Cross section VK25

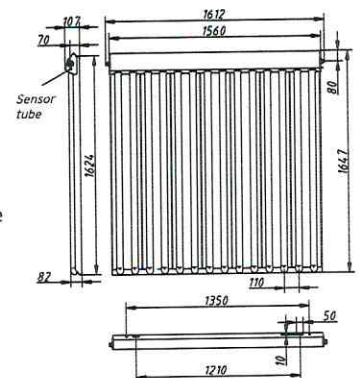


- 1 Solar radiation
- 2 CPC reflector
- 3 Evacuated tube
- 4 Highly selective coating
- 5 Vacuum - the best insulation
- 6 Copper pipes
- 7 Heat transfer plate

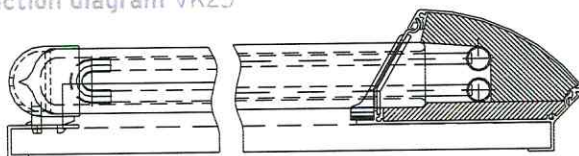
Installation VK25

Recommended collector angle at least approx. 30° (produces self-cleaning effect/minimises pressure from snow). Installation in areas with heavy snowfall or hailstone levels is not recommended. Do not install any fittings as flow volume gauges or other items upstream of heat exchanger in collector flow system or near to collector as there is a risk of overheating. Please use evacuated tube collector sensor SKSPT1000V.

Dimensions VK25



Section diagram VK25



Features of evacuated tube collector VK25

- Higher output due to vacuum insulation
- High temperatures - even in poor weather conditions
- High output due to exploitation of diffuse and oblique radiation via CPC reflector and circular evacuated tube absorber
- Simple maintenance - tubes can be changed without having to drain solar circuit
- Simple assembly process - low assembly costs
- High output even at lower outside temperatures



Register-Nr. VK25 01-7S115 R





Industrie

Kreislauf

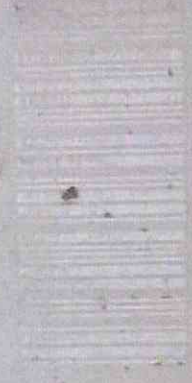
D-66214

Hersteller: OTC

Hersteller: OTC

Hergestellt in

Made in Austria



Vacuum tube collector

Type/Model: VK25 / 111401

Bruttofläche / Gross Area: 2,57 m²

Aperturfläche / Apertur: 2,21 m²

Nettofläche / Net Area: 2,36 m²

Dimensionen / Dimensions: 1560x1647x107 mm

Gewicht / Weight: 42 kg

Stillstandstemperatur / Stagnation Temperature: 270 °C

Max. Betriebsdruck / Max. Pressure: 10 bar

Inhalt / Contents: 2,3 l

Bitte Frostgeschützt füllen! / ATTENTION: Use only anti-freeze!